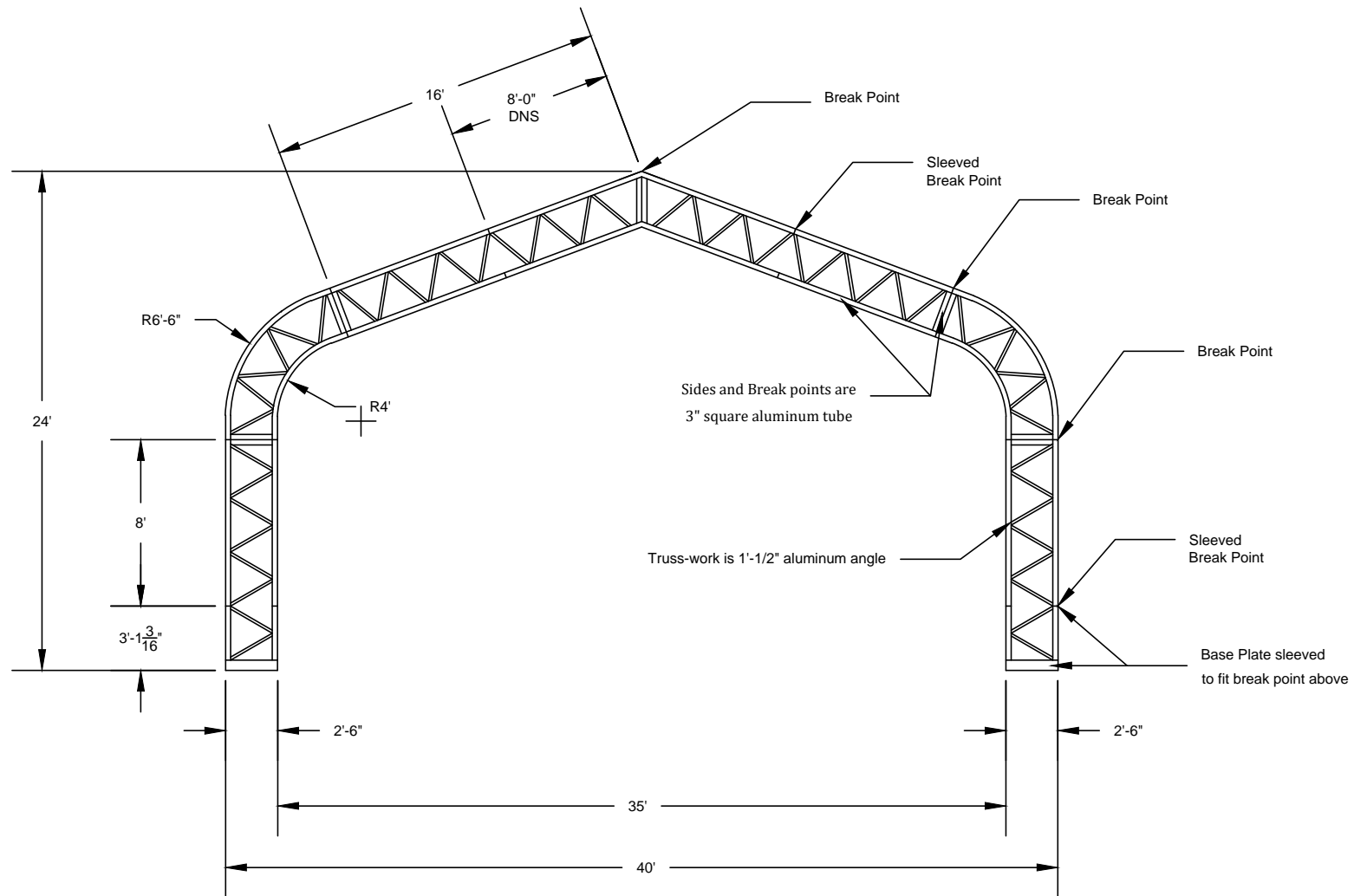


Ground Plan

BLACK TRAVELER	42'-2"	59
6 ELECTRIC	41'-6"	58
-	40'-10"	57
-	40'-2"	56
-	39'-6"	55
-	38'-10"	54
-	38'-2"	53
PLASTIC	36'-10"	52
BLACK OUT	36'-2"	51
BLACK SCRIM	35'-6"	50
-	34'-10"	49
DRAPES	34'-2"	48
5 LEGS	33'-6"	47
5 BORDER	32'-10"	46
5 ELECTRIC	32'-2"	45
BLACK SWAN DRAPE	31'-6"	44
LIGHTS	30'-10"	43
4 ELECTRIC	30'-2"	42
CURTAIN SL	28'-10"	41
LANTERNS	28'-2"	40
ARCH	27'-6"	39
DEAD	26'-10"	38
DEAD	26'-2"	37
#3 ORCHESTRA SHELL	25'-6"	36
DEAD	24'-10"	35
4 LEGS	24'-2"	34
4 BORDER	23'-6"	33
DRAPE MSR	22'-10"	32
TRIANGLES MSL	22'-2"	31
3 ELECTRIC	21'-6"	30
LANTERNS	20'-10"	29
ROMANI WHEEL	20'-2"	28
MID STAGE BLACK OUT	19'-6"	27
3 LEGS	18'-2"	26
3 BORDER	17'-6"	25
DEAD	16'-10"	24
DEAD	16'-2"	23
#2 ORCHESTRA SHELL	15'-6"	22
DEAD	14'-10"	21
LIGHT SR	14'-2"	20
LIGHT/MOON SL	13'-6"	19
CURTAIN SR	12'-10"	18
DROP BOX ELECTRIC	12'-2"	17
PENTACLE	11'-6"	16
LARGE ARCH	10'-8"	15
2 LEGS	10'-2"	14
2 BORDER	9'-6"	13
DRAPE SR	8'-10"	12
HAND SL	7'-6"	11
DEAD	6'-10"	10
DEAD	6'-2"	9
#1 ORCHESTRA SHELL	5'-6"	8
DEAD	4'-10"	7
DRAPE DSL	4'-2"	6
EYE SR	3'-6"	5
1 ELECTRIC	2'-10"	4
1 LEGS	2'-2"	3
1 BORDER	1'-6"	2
MAIN CURTAIN	0'-8"	1
PLASTER LINE	0'-0"	0

NOTES:

- Sides are 3" square aluminum tube
- Truss-work is 1-1/2" aluminum angle
- Discuss hanging points for installation in theatre

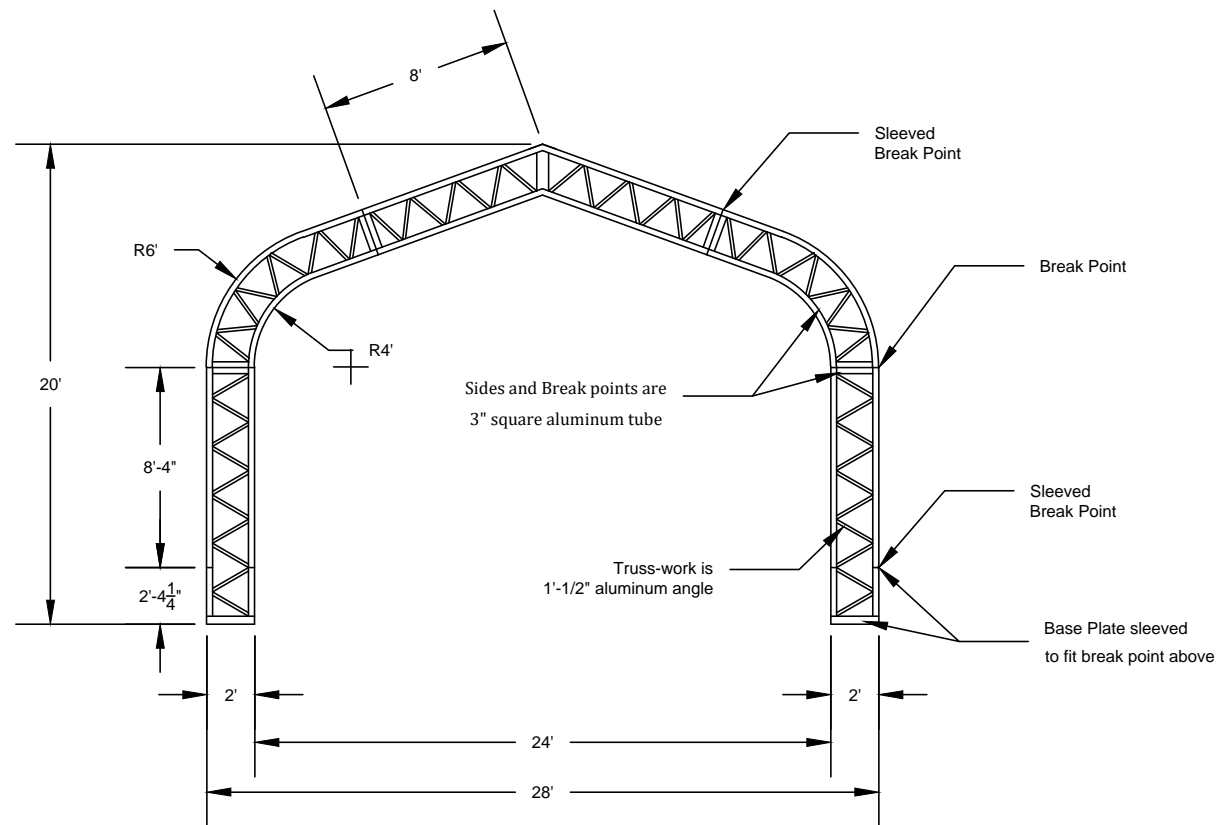


Large Arch Front Elevation

Plate 4 of 8	
Date: 10/19/2015	Scale: 1/8" = 1'-0"
Note: Drawings depict suggestions only and are not intended to be construction drawings. Harris Theatre 205 E Randolph St., Chicago, IL 60601 312.334.7777	
Jeff Bauer scenic design 773.960.0066 jbauer@depaul.edu	
DAY OF THE GYPSY Plate Title: LARGE ARCH ELEVATION Director: Scenic Designer: Jeff Bauer Lighting: Drafter: Elyse Balogh Tech Director:	

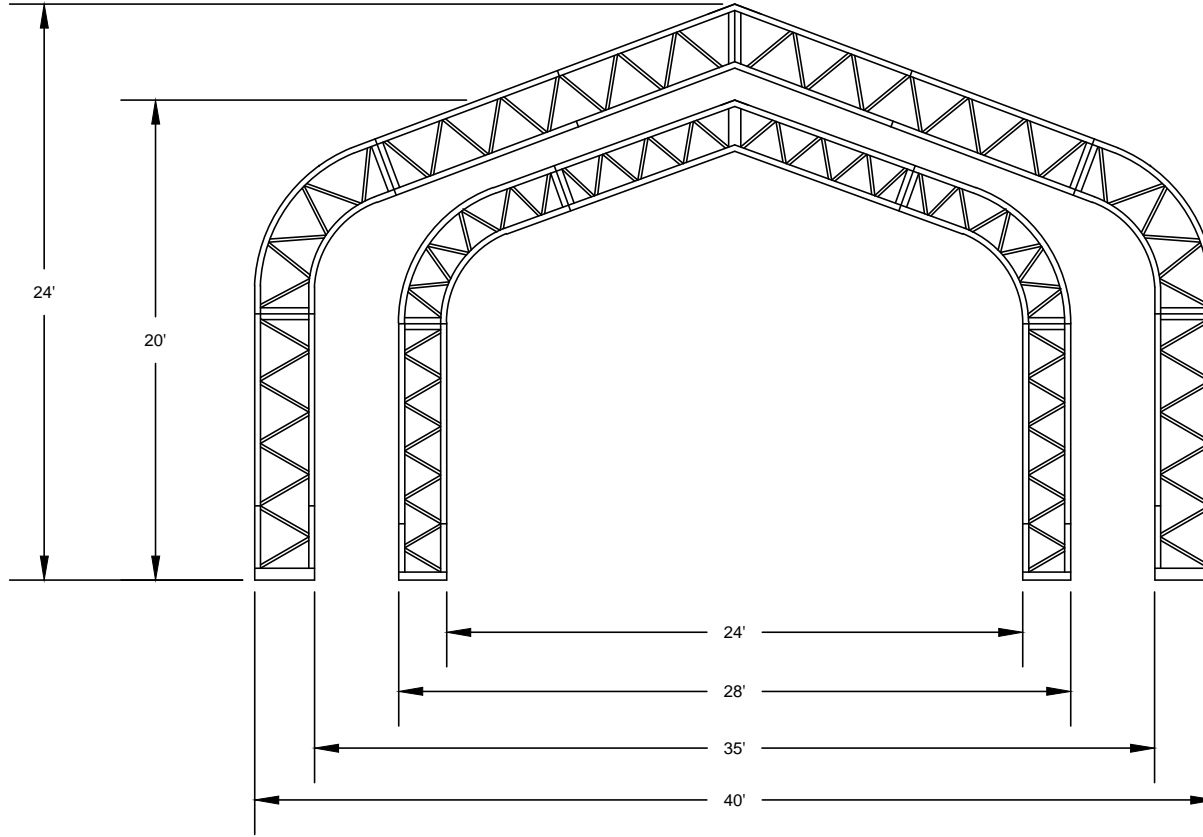
NOTES:

- Sides are 3" square aluminum tube
- Truss-work is 1-1/2" aluminum angle
- Discuss hanging points for installation in theatre



Small Arch Front Elevation

5 of 8 Plate	
Date: 10/19/2015 Scale: 1/8" = 1'-0"	Harris Theatre 205 E Randolph St., Chicago, IL 60601 312.334.7777
Note: Drawings depict suggestions only and are not intended to be construction drawings.	
Jeff Bauer scenic design 773.960.0066 jbauer@depaul.edu	
DAY OF THE GYPSY Plate Title: SMALL ARCH ELEVATION Director: Scenic Designer: Jeff Bauer Lighting: Drafter: Elyse Balogh Tech Director:	



Front Elevation

DAY OF THE GYPSY

Plate Title: COMBINED ARCH ELEVATION

Director: Scenic Designer: Jeff Bauer
 Lighting: Drafter: Elyse Balogh
 Tech Director:

Jeff Bauer
 scenic design

773.960.0066 | jbauer@depaul.edu

Note: Drawings depict suggestions only and are not intended to be construction drawings.

Date: 10/19/2015

Scale: 1/8" = 1'-0"

Harris Theatre

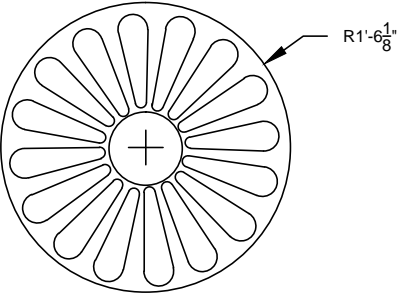
205 E Randolph St., Chicago, IL 60601
 312.334.7777

Plate

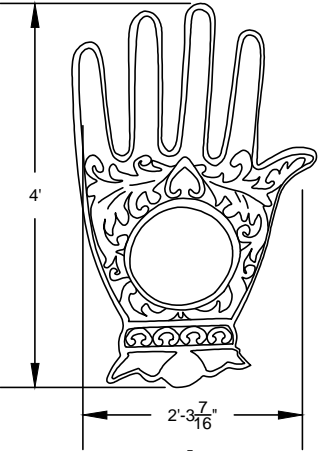
6

of 8

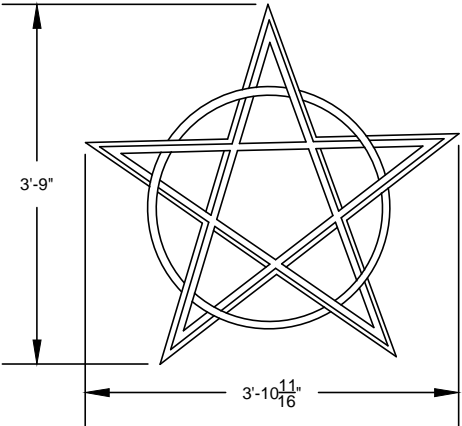
NOTES:
- All need to be rigged to hang



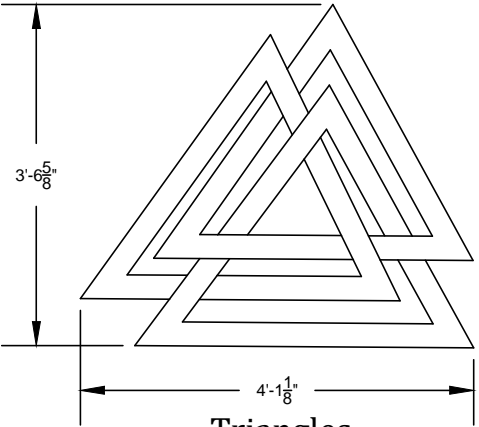
Romani Wheel
Line set 28



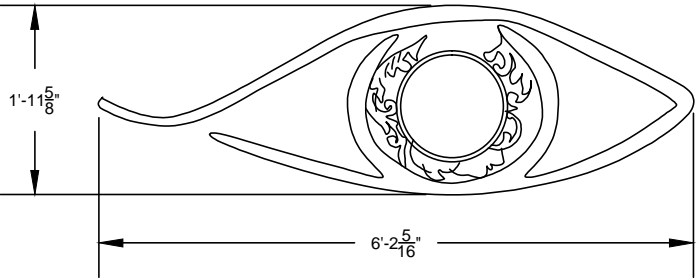
Hand
Line set 11



Pentangle
Line set 16



Triangles
Line set 31

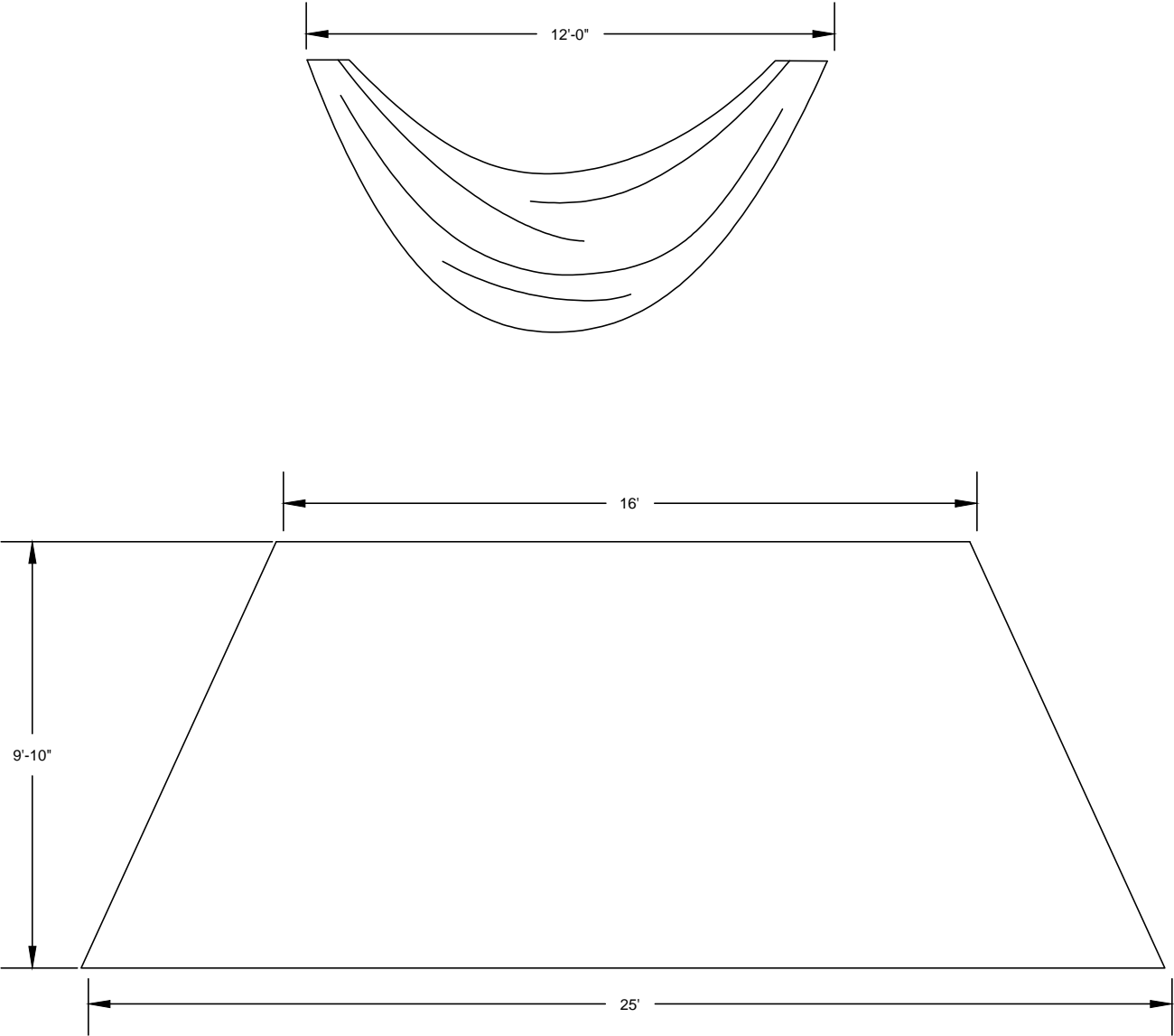


Eye
Line set 6

Front Elevation

Plate 7 of 8	
Date: 10/19/2015	Scale: 1/2" = 1'-0"
Note: Drawings depict suggestions only and are not intended to be construction drawings.	
Harris Theatre 205 E Randolph St., Chicago, IL 60601 312.334.7777	
Jeff Bauer scenic design 773.960.0066 jbauer@depaul.edu	
DAY OF THE GYPSY	
Plate Title: FILIGREE ELEVATION	
Director: Scenic Designer: Jeff Bauer Tech Director:	Lighting: Drafter: Elyse Balogh

- NOTES:
- 118" sheer fabric
 - Colors to be determined



Front Elevation

DAY OF THE GYPSY		Jeff Bauer scenic design 773.960.0066 jbauer@depaul.edu		Harris Theatre 205 E Randolph St., Chicago, IL 60601 312.334.7777	
Plate Title: FABRIC ELEVATION		Date: 10/19/2015		Plate 8 of 8	
Director: Scenic Designer: Jeff Bauer Tech Director:		Note: Drawings depict suggestions only and are not intended to be construction drawings.		Scale: 1/4" = 1'-0"	
Lighting: Drafter: Elyse Balogh					